

Scoops, Strainers & Fittings

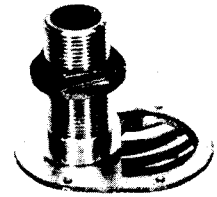
INTAKE SCOOPS & STRAINERS

All bronze intake water scoop and grill to prevent entry of larger foreign matter. Efficient design permits maximum water flow with minimum restriction. Cast in one piece and carefully machined for greatest strength.



EW107/108

PART No.	SIZE (n.p.t.)	SHANK LENGTH
EW1	1/2"	2 1/2"
EW2	3/4"	2 1/2"
EW3	1"	2 1/2"
EW4	1 1/4"	3"
EW5	1 1/2"	3 1/2"



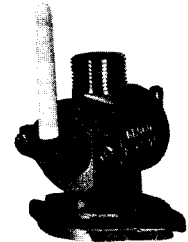
For double insurance in areas where sea weed, eel grass or other marine plants are abundant or where waters are polluted with plastic sheets or bags or other debris, use one of these protective strainers over the intake scoop. All bronze, skilfully designed for maximum water flow.

EW107	For use with intakes to 1 1/4". Measures 4 3/8 x 9"
EW108	For use with 1 1/2" intake. Measures 5 1/4 x 12 1/4"

SEA COCK (WATER SHUT-OFF)

Prevent possible casualty by closing water supply when leaving boat or in case of emergency. This all bronze sea cock provides such safety with instant shut-off by moving lever 90°. Full flow without restriction when open. Bottom (intake) threaded to accommodate stem of water intake scoop or thru-hull fitting. Top threaded for pipe or to adapt with female hose connectors below.

PART No.	SIZE (n.p.t.)	PART No.	SIZE (n.p.t.)
EW21	3/4"	EW23	1 1/4"
EW22	1"	EW24	1 1/2"



HOSE CONNECTORS (NIBS)

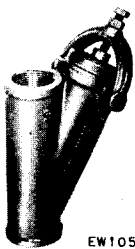
Bronze hose nibs are employed to adapt hose to pipe threads. They assure a non-slip, water tight connection. Use with hose clamps as listed under "Exhaust System" parts. Female type adaptors are available either straight or elbow type and are provided with required sealing gasket.



PIPE SIZE (THREAD)	HOSE I.D. SIZE	FEMALE STRAIGHT	FEMALE EL BOW	MALE STRAIGHT
3/4"	3/4"	EW76	EW85	EW91
1"	1"	EW77	EW86	EW92
1 1/4"	1 1/4"	EW78	EW87	EW93
1 1/2"	1 1/2"	EW79	EW88	EW94

WATER STRAINERS

Protection of the cooling system in any marine engine is of utmost importance as irreparable damage could be caused by entry of foreign matter into the water jackets. Engines with heat exchangers are particularly vulnerable and should be protected. The inboard water strainer is an important adjunct to the protective grill or screen of water scoop outside of hull. The inboard strainer should be installed close to sea cock in accessible location so that it may be periodically checked and cleaned of debris.

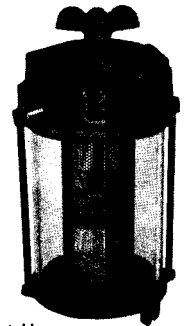


EW105/106

This series of sea water strainers allows visual inspection through the transparent lucite cylinder without disconnecting fittings or closing sea cock. Bronze castings with monel tie rod and strainer basket. Screen removable from top without disturbing any plumbing.

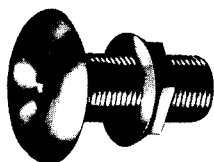
The in-line type strainer is an all-bronze casting with a monel strainer basket. To clean, loosen top bolt, swing clamp to one side and remove basket.

PART No.	SIZE (npt)	HEIGHT x WIDTH
EW100	1/2"	7 1/2 x 4 7/16
EW101	3/4"	9 x 4 7/16
EW102	1"	10 1/4 x 5 1/2
EW103	1 1/4"	12 3/4 x 5 1/2
EW104	1 1/2"	12 3/8 x 7 1/2
EW105	1"	9 x 4
EW106	1 1/4"	10 x 5



THRU-HULL FITTINGS

Thru-hull fittings may be used for discharging water as from sink drain, excess engine cooling water, etc. All bronze, provided with retaining nut.



PART No.	PIPE SIZE	MAX. HULL THICKNESS
EW475	1/2"	2 1/8"
EW476	3/4"	2 3/8"
EW477	1"	2 3/4"
EW478	1 1/4"	3 1/4"
EW479	1 1/2"	3 1/2"
EW480	2"	4"
EW481	2 1/2"	4"
EW482	3"	5 1/4"