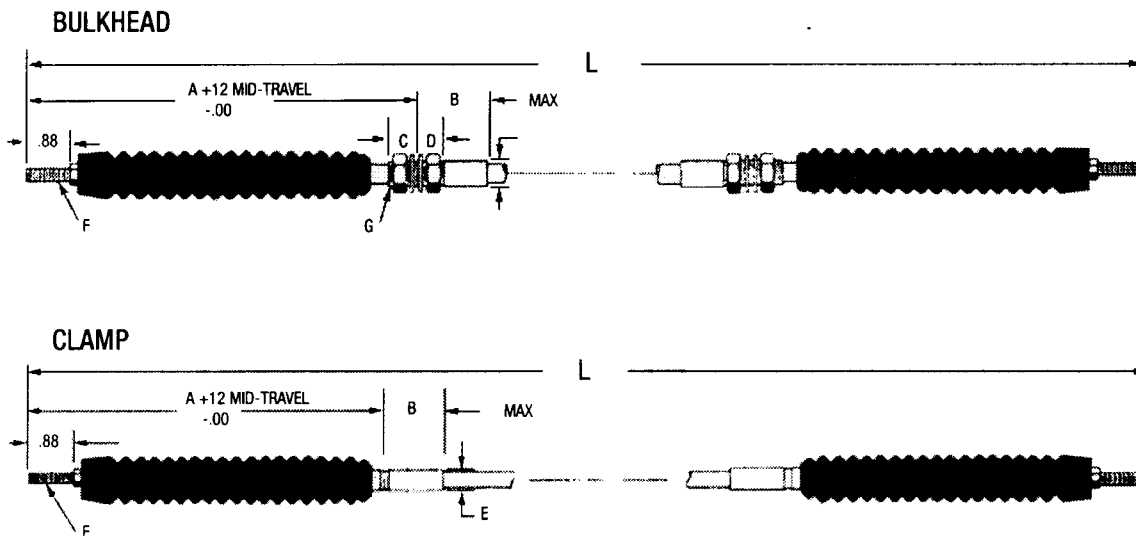


Accelerator Cables

Designed for mechanical throttle applications. Silicone rubber boots at both ends help keep out dirt and other contaminants. Ideal for use with TeleflexMorse accelerator pedals.



*** For fastest delivery ask about *TMAP* cables. Custom built and shipped the same day!
(40 series only)**

Cable Series	Part Number	End Type	Travel	"A"	"B"	"C"	"D"	"E" Dia.	"F" Thread UNF-2A	"G" Thread UNF-2A	Recommended Max. load (pull only)
30	068334-002-XXXX (length in inches)	BULKHEAD	2" (50.8)	5.88 (149.4)	1.44	.56	.56	.44	10-32	7/16-20	40 lbs. (178 N)
	068333-002-XXXX (length in inches)	CLAMP		5.19 (131.8)	1.13	-	-	.44	10-32	-	
	068334-003-XXXX (length in inches)	BULKHEAD	3" (76.2)	7.38 (187.5)	1.44	.56	.56	.44	10-32	7/16-20	
	068333-003-XXXX (length in inches)	CLAMP		6.69 (169.9)	1.13	-	-	.44	10-32	-	
40	068343-002-XXXX (length in inches)	BULKHEAD	2" (50.8)	6.12 (155.6)	1.63	.75	.75	.63	1/4-28	5/8-18	100 lbs. (444 N)
	068357-002-XXXX (length in inches)	CLAMP		5.50 (139.7)	1.38	-	-	.50	1/4-28	-	
	068343-003-XXXX (length in inches)	BULKHEAD	3" (76.2)	7.62 (193.7)	1.63	.75	.75	.63	1/4-28	5/8-18	
	068357-003-XXXX (length in inches)	CLAMP		7.00 (177.8)	1.38	-	-	.50	1/4-28	-	
	0301127-002-XXXX (length in inches) 0301127-003-XXXX (length in inches)	BULKHEAD/ CLAMP	(COMBINATION OF ABOVE 40 SERIES BULKHEAD & CLAMP)							1/4-28	

All Dimensions are in inches (mm)

Phone: 800-225-0004 ☎ Fax: 908-486-1056
e-mail: sales@sealandpower.com

Ind/023