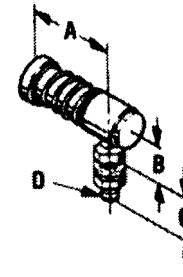


Cable Fittings and Hardware

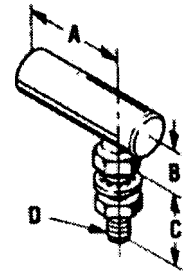
BALL JOINTS					
Part Number	A	B	C	D	Type
30 Series					
031126	31/32 (24.6)	15/32 (11.9)	9/19 (14.3)	1/4-28 UNF-2A	QR
031799-001	29/32 (23.0)	15/32 (11.9)	7/16 (11.1)	10-32 UNF-2A	QR
035242	1 1/8 (28.6)	17/32 (13.5)	7/8 (22.2)	5/16-24 UNF-2A	QR
40 Series					
029104	31/32 (24.6)	15/32 (11.9)	9/16 (14.3)	1/4-28 UNF-2A	QR
032267	31/32 (24.6)	17/32 (13.5)	7/8 (22.2)	5/16-24 UNF-2A	QR
60 Series					
029108	1 1/8 (28.6)	17/32 (13.5)	7/8 (22.2)	5/16-24 UNF-2A	QR
038491	1 1/8 (28.6)	17/32 (13.5)	11/16 (17.5)	5/16-24 UNF-2A	ST

All Dimensions are in Inches (mm)

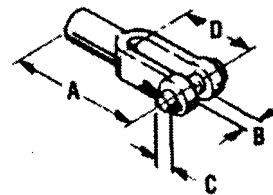
CLEVIS				
Part Number	A	B	C	D
30 Series				
031125	2 (50.8)	9/32 (7.1)	1/4 (6.4)	1 1/4 (31.8)
031800	1 9/16 (39.7)	3/16 (4.8)	3/16 (4.8)	1 (25.4)
033395	2 1/4 (57.2)	11/32 (8.7)	5/16 (7.9)	1 7/16 (36.50)
40 Series				
029025	2 (50.8)	9/32 (7.1)	1/4 (6.4)	1 1/4 (31.8)
042212	2 1/4 (57.2)	11/32 (8.7)	5/16 (7.9)	1 7/16 (36.5)
045985	2 1/2 (63.5)	7/16 (11.1)	5/8 (9.5)	1 5/8 (41.3)
60 Series				
029132-001	2 1/4 (57.2)	11/32 (8.7)	5/16 (7.9)	1 7/16 (36.5)
042034	2 1/2 (63.5)	7/16 (11.1)	5/8 (9.5)	1 5/8 (41.3)



Type QR



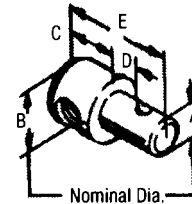
Type ST



Clevis

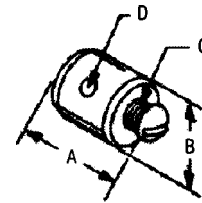
Cable Fittings and Hardware

PIVOTS					
Part Number	A	B	C	D	E
30 Series					
031029	1/4 (6.4)	7/16 (11.1)	21/64 (8.3)	9/64 (3.6)	5/8 (15.9)
031539	1/4 (6.4)	7/16 (11.1)	3/8 (9.5)	.191 (4.9)	23/32 (18.3)
032392	1/4 (6.4)	7/16 (11.1)	21/64 (8.3)	.295 (7.5)	25/32 (19.8)
40 Series					
031537	1/4 (6.4)	1/2 (12.7)	1/2 (12.7)	13/64 (5.2)	7/8 (22.2)
036361	1/4 (6.4)	1/2 (12.7)	1/2 (12.7)	17/64 (6.7)	15/16 (23.8)
039110	1/4 (6.4)	1/2 (12.7)	7/16 (11.1)	9/64 (3.6)	3/4 (19.1)
042272	5/16 (7.9)	1/2 (12.7)	7/16 (11.1)	9/64 (3.6)	3/4 (19.1)
042419	3/8 (9.5)	9/16 (14.3)	1/2 (12.7)	25/64 (9.9)	1 3/16 (20.6)
045199	5/16 (7.9)	1/2 (12.7)	9/16 (14.3)	9/64 (3.6)	29/32 (23.0)

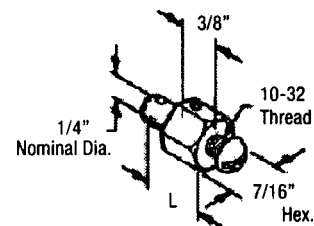


Pivots

STOP COLLAR				
Part Number	A	B	C	D
30 Series Only				
037693	3/8 (9.5)	3/8 (9.5)	8-32 -	3/32 (2.4)



CORE FITTINGS		
Part Number	Lever Thickness	"L" Dim.
30L Series		
047639	1/8 (3.0)	21/32 (16.5)
047641	1/4 (6.4)	13/16 (20.6)



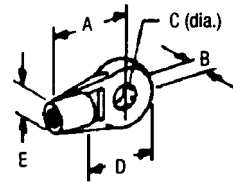
All Dimensions are in Inches (mm)

Phone: 800-225-0004 ☎ Fax: 908-486-1056
e-mail: sales@sealandpower.com

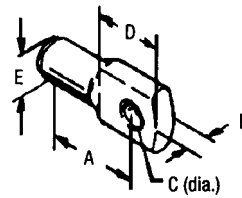
Ind/025

Cable Fittings and Hardware

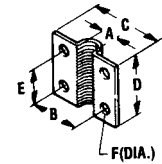
TERMINAL EYES					
Part Number	A	B	C	D	E
30 Series					
031980 (Aluminum)	1 (25.4)	15/64 (6.0)	5/16 (7.9)	3/4 (19.1)	1/2 (12.7)
300646 (Nylon)	1 (25.4)	15/64 (6.0)	5/16 (7.9)	3/4 (19.1)	1/2 (12.7)
40 Series					
041134	1 3/8 (34.9)	5/16 (7.9)	5/16 (7.9)	3/4 (19.1)	1/2 (12.7)
046170	1 3/8 (34.9)	5/16 (7.9)	1/4 (6.4)	3/4 (19.1)	1/2 (12.7)
037639	1 (25.4)	15/64 (6.0)	5/16 (7.9)	3/4 (19.1)	1/2 (12.7)
60 Series					
045428	1 3/8 (41.3)	5/16 (7.9)	5/16 (7.9)	3/4 (19.1)	1/2 (12.7)



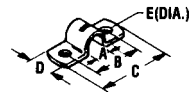
031980
300646



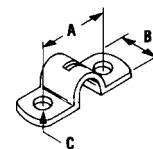
037639
041134
045428
046170



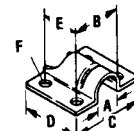
037664



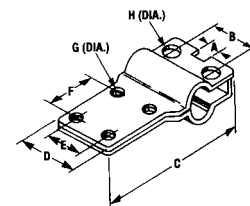
031509
031532
036733



032010



021227



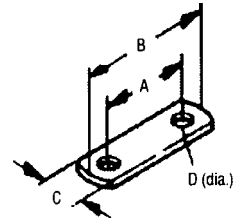
021600

CLAMPS								
Part Number	A	B	C	D	E	F	G	H
30L & 30 Series								
031509	3/8 (9.5)	1 (25.4)	1 1/2 (38.1)	1/2 (12.7)	12/64 (5.1)			
30 Series Only								
032010	7/8 (22.2)	1/2 (12.7)	3/16 (4.7)					
021600	1/4 (6.35)	7/8 (22.10)	2 3/4 (69.8)	1 1/4 (31.8)	3/4 (18.92)	1 (25.4)	13/64 (5.16)	17/64 (6.76)
40 Series								
021227	1/2 (12.7)	1 (25.4)	1 1/2 (38.1)	1 1/4 (31.8)	3/4 (19.1)	7/32 (5.6)		
021600	1/4 (6.35)	7/8 (22.10)	2 3/4 (69.8)	1 1/4 (31.8)	3/4 (18.92)	1 (25.4)	13/64 (5.16)	17/64 (6.76)
031532	1/2 (12.7)	1 (25.4)	1 1/2 (38.1)	1/2 (12.7)	7/32 (5.6)			
60 Series								
036733	9/16 (14.3)	1 1/4 (31.8)	1 3/4 (44.5)	5/8 (15.9)	9/32 (7.1)			

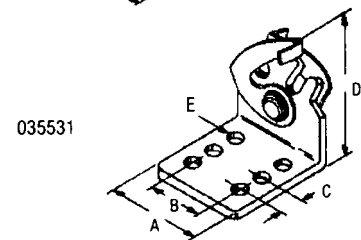
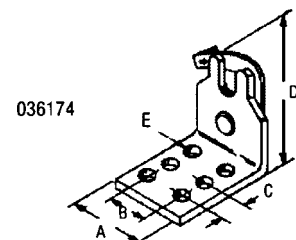
All Dimensions are in Inches (mm)

Cable Fittings and Hardware

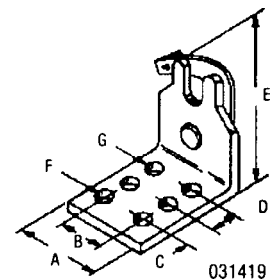
SHIMS				
Part Number	A	B	C	D
031538	1 (25.4)	1 1/2 (38.1)	1/2 (12.7)	13/64 (5.1)
037884	1 1/4 (31.8)	1 3/4 (44.5)	5/8 (15.9)	9/32 (7.1)



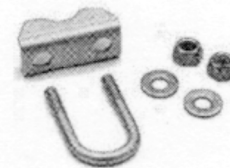
CABLE HOOK CLIP (30 Series Only)					
Part Number	A	B	C	D	E
036174 (SINGLE)	1 (25.4)	1/2 (12.7)	3/8 (9.5)	1 1/2 (38.1)	13/64 (5.1)
035531 (DUAL)	1 1/4 (31.8)	3/4 (19.0)	3/8 (9.5)	1 1/2 (38.1)	13/64 (5.1)



CABLE CLIP							
Part Number	A	B	C	D	E	F	G
30 Series Only							
031419	1 (25.4)	1/2 (12.7)	3/8 (9.5)	1/2 (12.7)	1 3/16 (30.1)	1/4 (6.3)	3/16 (4.7)



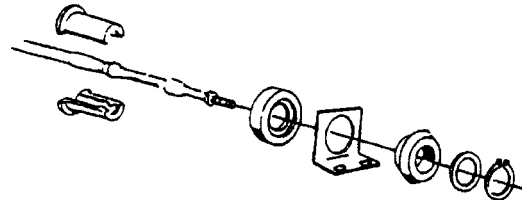
U-BOLT KITS	
Part Number	Description
063651	40 Series U-Bolt Kit for 40C Cables
063988	60 Series U-Bolt Kit for 60C Cables



Cable Fittings and Hardware

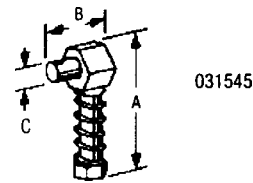
CABLE MOUNTING/ANTI-VIBRATION KITS	
Part Number	Description
294200	30 Series C-Mounting / Isolator Kit
294201	40 Series C-Mounting / Isolator Kit

Cable Mounting Anti-Vibration Kits

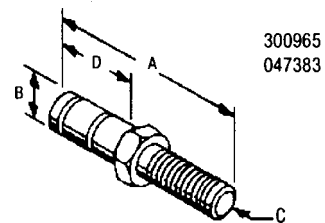


- Reduces Noise and Vibration
- Reduces Cable Cost (C vs. B)

SPRING LINK TERMINAL			
Part Number	A	B	C
30 Series Only			
031545	1 1/4 (31.7)	21/32 (16.6)	1/4 (6.3)



TERMINAL EYE PIN				
Part Number	A	B	C	D
300965	1 1/2 (38.1)	5/16 (8.0)	1/4-28 -	19/32 (15.1)
047383	1 11/16 (42.8)	5/16 (8.0)	1/4-28 -	7/8 (22.2)



30L CABLE ADAPTER KITS	
Part Number	Description
300673	Bulkhead Adapter Kit
302485	Clamp Adapter Kit

